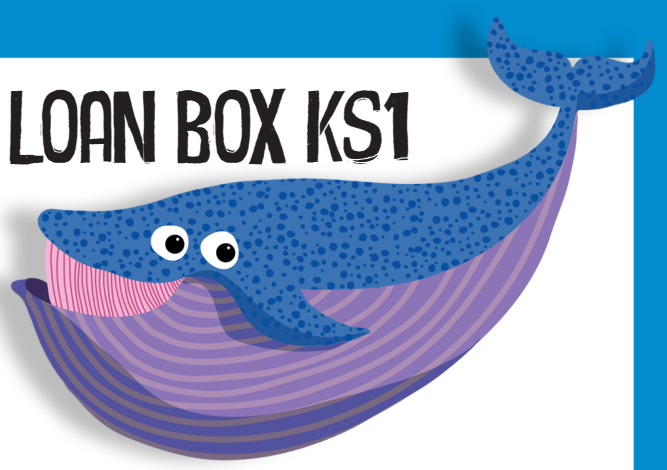


THE DEEP'S OCEANS LOAN BOX KS1



Hello and thank you for choosing to borrow our Loan box. Here are some tips on how to get the most from your Loan Box.

Some of the items can be used to create a display or encourage discussion. Some of the activities could be set and used as a carousel within the classroom as a hook or consolidation for their previous learning.

Activity 1: A3 World Map with animals and continent and oceans labels

Children label the world map using their knowledge or school atlas.

Activity 2: Sea life Pairs game

Activity 3: Shell investigation

Children can handle, draw/sketch these shells. (Nautilus – endangered, Cities registered), Abalone, Scallop, Conch)
Find about where they would be found and the animals that create them.

Activity 4: Picture Books

To investigate themselves or can be used as group or class readers.



Deep Blue Sea has a range of associated questions for a group session.
Chomp Goes to School has a range of associated questions for a group session.

Activity 5: Guess what's in the bag

There are 6 Feely bags. The children describe how the object feels (number of legs, fins, and tentacles) guess the creature in their bag before they reveal it.

Activity 6: Creature information cards

An adult reads the information cards, children learn about some of the creatures that survive within our oceans. They think of questions they would like to answer to find out more.

Activity 7: Classification

1. Use the animals and the question cards to explore, research, explain what you know.
2. Explore the difference between Vertebrates and Invertebrates. Match the description of classification features to the animal labels. (See answer card)

Activity 8: Keywords cards

Spread out the cards on a table face down. Each child chooses a card in turn and talks about what is on it. (Could be timed) Who can describe the most in a set time?

Activity 9. Food Chain

Basic Food chain to complete. Sun, plankton, fish, seal, shark.

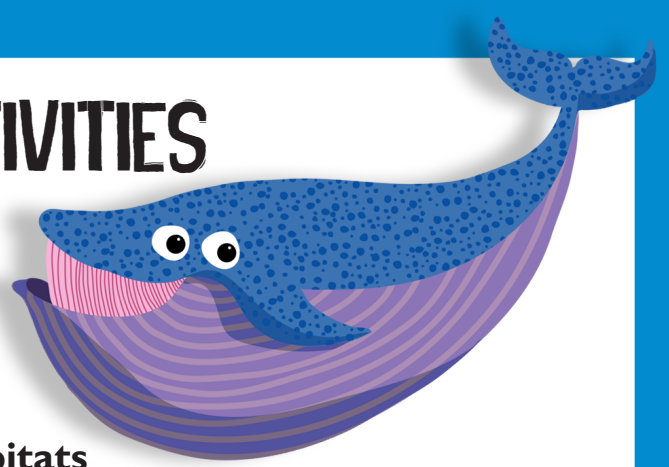
Activity 10: Colouring sheets

Activity 11: Animals at The Deep

Activity 12: Phonics cards



HABITATS ACTIVITIES



Investigate Habitats

Seashore Habitat

1. Create a small world Mockpool
2. Complete the Rockpool Safari

Coral Reef Habitat

1. Coral Reef book
2. Observe, draw and learn using the Replica corals and real Lophelia Coral skeleton.
3. Small world animals who live in a coral reef / coral reef playmat.
3. Who lives in which habitat? Discuss and place the animals in the correct habitat.

THE DEEP Habitats book can be used to explore different ocean habitats or create their own story.



CONSERVATION FOCUS

Use these lovely books to develop discussion about current conservation issues.

1. Hunter's Icy Adventure – Climate change and the threats to Polar Bears in the Polar regions.
2. Turtle Trouble – Plastics in the Ocean



OCEANS BOX KS1

Activity 1	World map	Pictures of animals, Map labels
Activity 2	Sea life Pairs	1 x Tin
Activity 3	Shell Investigation	4 x Cards / 4 x Shells
Activity 4	Picture books x5	Deep Blue Sea Chomp goes to school Floppy Ocean sounds Finbar the fish
Activity 5	Guess what's in the bag?	6 x Bags
Activity 6	Creature Information cards	6 x Cards
Activity 7	Classification	3 x Info cards 6 x Question cards 17 x Invertebrate cards 12 x Vertebrate cards
Activity 8	Keyword cards	32 keywords
Activity 9	Food chain	6 x Packs
Activity 10	Colouring sheets	x 2
Activity 11	Animals at The Deep	9 x Cards
Activity 12	Phonics cards	22 x Cards
Habitats Activity	Seashore	2 x Rockpool Safari sheets Book: By the Seashore <u>Small world</u> 1 x Crab, 2 x starfish, 1 x lobster, 3 x anenome, 3 x mussels, 2 x seahorse, 6 x shells, 4 x rocks
Habitats Activity	Coral Reef	Coral Reef book 1 x Real Coral Lophelia 1 x Replica coral example <u>Small world</u> 1 x Coral reef playmat Octopus, 2 x lionfish 2 x starfish, 2 x clownfish, 2 x blue striped fish, 2 x fishing nets
Habitats Activity	Who lives in which habitat interactive book	1 x Book with pictures
Discussion	Conservation Focus	Book: Hunter's Icy Adventure Book: Turtle Trouble

